

SLIMLINE CLUTCH WITH SIDE FIXING SCREW



29ZW0189B010



KEY FEATURES

This variation of clutch was designed specifically where the splitter wire is shorter than 100mm. In such a case the space below the clutch to locate and lock the splitter wire can be very limited.

As an alternative the splitter wire slot is sawn horizontally in to the clutch body. This enables the wire to be assembled from the side and fixed with an M4 socket grubscrew.

The suspension wire passes vertically through the clutch. Whilst height adjustment is achieved by depressing the top plunger to allow the clutch to move up and down vertically along the suspension wire.



Safe working load is 18 kilos maximum



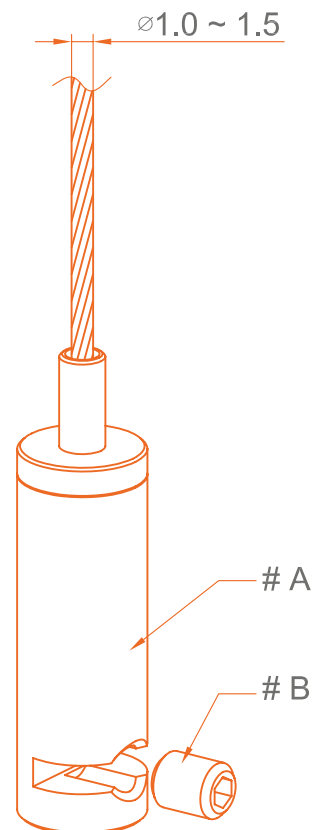
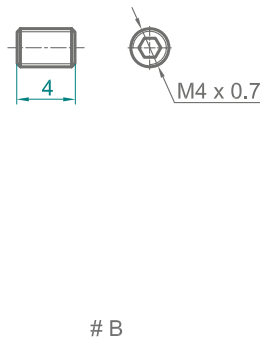
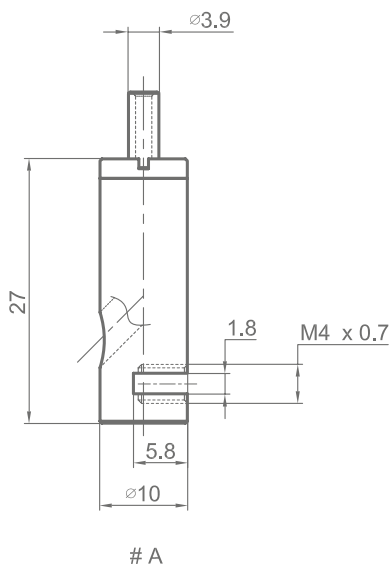
High quality brass, satin nickel finish



For use with 1.5mm galvanised wire



Suitable for splitter wires



T: 01527 502211
F: 01527 502277

sales@in2components.com
www.in2components.com

82 Arthur Street, Lakeside, Redditch, B98 8JY