

M8 KNURLED SUSPENSION CLUTCH



29100512C



KEY FEATURES

With 10mm x 20mm body dimensions and an M8 male thread at its base. This allows the clutch to be assembled to the top of a fitting either in to a threaded insert or through a hole in to a separate locknut.

The knurled body is both aesthetically pleasing but also enables the installer to finger tighten the clutch in place.

The suspension wire passes vertically through the clutch allowing the wire to be contained inside the luminaire body. Height adjustment is simply achieved by depressing the top plunger to allow the suspension wire to pass through the clutch to a preferred level.



Safe working load is 18 kilos maximum



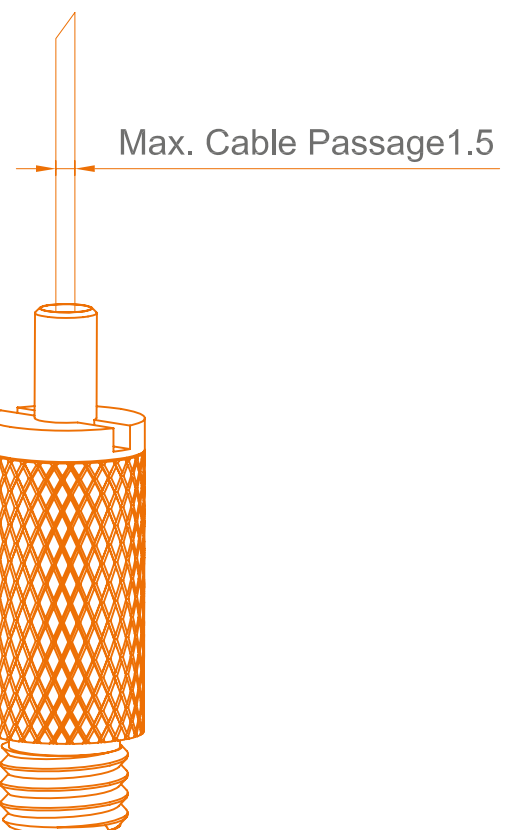
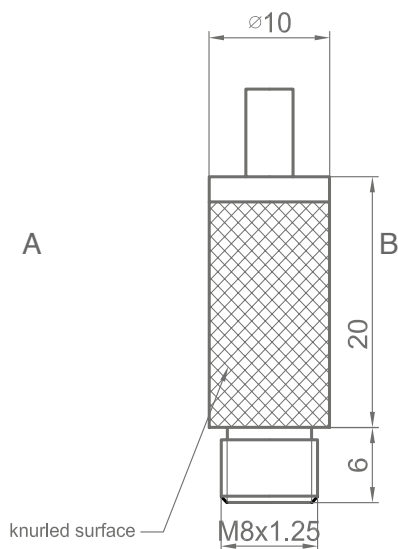
High quality brass, satin nickel finish



For use with 1.5mm galvanised wire



Direct attachment to a fitting



T: 01527 502211
F: 01527 502277

sales@in2components.com
www.in2components.com

82 Arthur Street, Lakeside, Redditch, B98 8JY