

M13 MALE LARGE HOLE & FEMALE CEILING BOSS SET

299531006401



KEY FEATURES

These high quality brass turned parts are finished in satin nickel.

The female boss has a tapped M6 threaded hole at the top to enable a strong connection to the ceiling.

The smaller male boss has a 3.5mm hole to allow up to three suspension wires with a pressed ferrule to be securely held, whilst allowing the wires to pass downwards to the clutch mechanisms.

The two parts can then be screwed together utilising the M13x1 threads to create a discreet top fixing for the suspension solution.



Safe working load is 18 kilos maximum



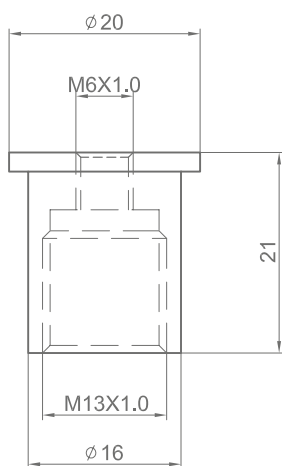
High quality brass, satin nickel finish



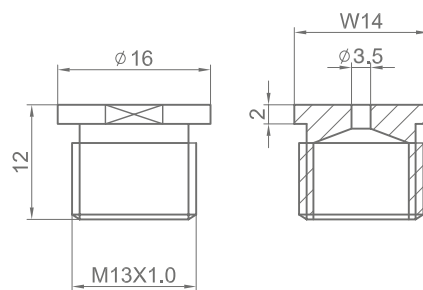
For use with 1.5mm galvanised wire



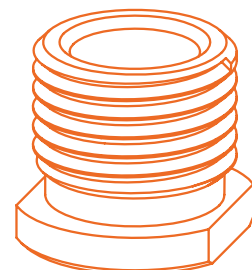
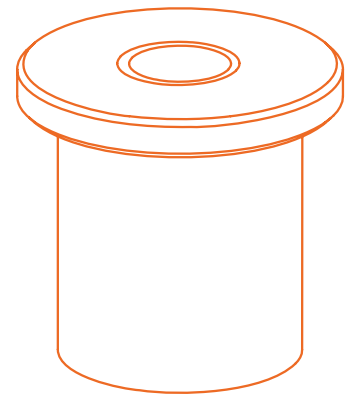
Suitable for 2 and 3 wire suspensions e.g pendants



#A



#B



T: 01527 502211
F: 01527 502277

sales@in2components.com
www.in2components.com

82 Arthur Street, Lakeside, Redditch, B98 8JY