

# M10 MALE & FEMALE CEILING BOSS SET



29M10FEMALE

29M10MALESLOT

## KEY FEATURES

These high quality brass turned parts are finished in satin nickel. They are the smallest ceiling boss set available.

The female boss has a tapped M6 threaded hole at the top to enable a strong connection to the ceiling.

The smaller male boss has a 2.0mm hole to allow the suspension wire with a pressed ferrule to be securely held, whilst allowing the wire to pass downwards to the clutch mechanism.

The two parts can then be screwed together utilising the M10x1 threads to create a discreet top fixing for the suspension solution.



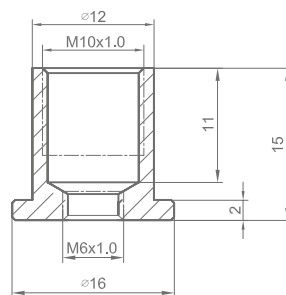
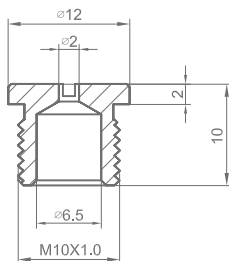
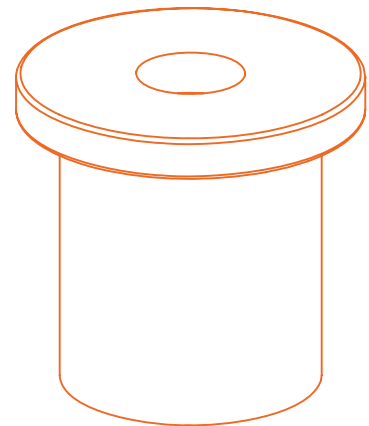
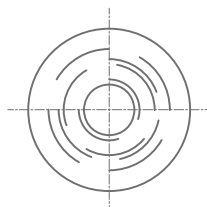
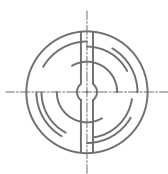
Safe working load is 18 kilos maximum



High quality brass, satin nickel finish



For use with 1.5mm galvanised wire



#A

item number: ZC-0047B-010

#B

item number: ZC-0046B-010

T: 01527 502211

F: 01527 502277

sales@in2components.com

www.in2components.com

82 Arthur Street, Lakeside, Redditch, B98 8JY

