

# CLUTCH WITH INTEGRAL SWIVEL JOINT



29151205-01



## KEY FEATURES

Designed to allow light fixtures to be hung at an angle in stairwells and bespoke applications. The swivel joint located at the base of the clutch allows adjustment through 180 degrees.

All of the usual clutch functionality remains the same, the suspension wire passes vertically through the clutch. Whilst the height adjustment is achieved by depressing the top plunger to allow the suspension wire to pass through the clutch to a preferred level.



Safe working load is 18 kilos maximum



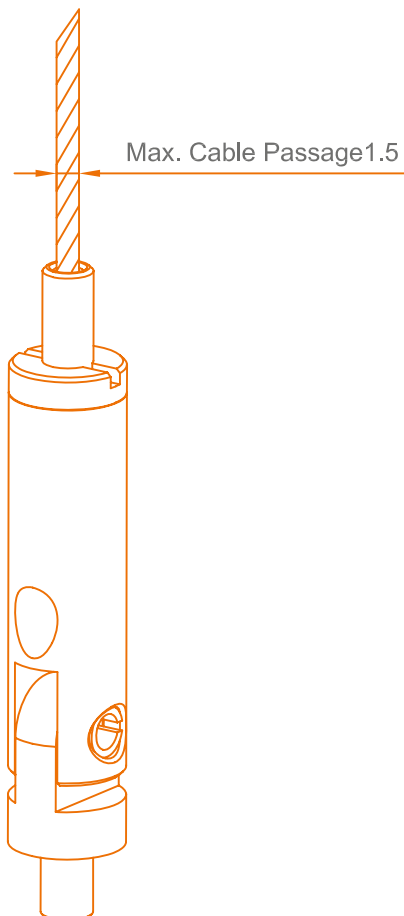
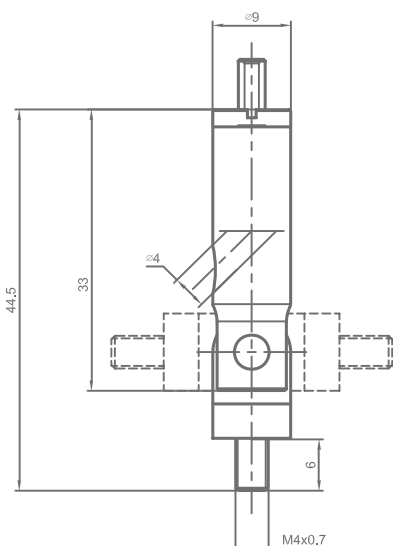
High quality brass, satin nickel finish



For use with 1.5mm galvanised wire



Direct and flexible attachment to a fitting



T: 01527 502211  
F: 01527 502277

sales@in2components.com  
www.in2components.com

82 Arthur Street, Lakeside, Redditch, B98 8JY